

# Medical Equipment & Healthcare furniture



## FPDGROUP

[www.fpd-group.co.uk/pharmacy-shelving](http://www.fpd-group.co.uk/pharmacy-shelving)

**WIDTH**  
80cm, 100cm

**DEPTH**  
30cm, 40cm, 50cm

## COLOUR

ANTIBACTERIAL CLINICAL WHITE - TEXTURED FINISH  
RAL 9003 - code: LA90



Med Trays 8cm H  
depths 30/40 or 50cm

Top Shelf Canopy  
50cm depth

Pigeon Hole Shelving  
30cm depth

Lin Bins  
depths 14 or 19cm

Worktops  
depth 57cm

Med Trays 8cm H  
Clear Riser  
30/40 or 50cm

Script Drawer 27cm H  
Frosted Riser  
depths 40 or 50cm

Base Drawer 43cm H  
depth 50cm

Base Drawer 23cm H  
depth 50cm

Script Drawer 17cm H  
Frosted Riser  
depths 40 or 50cm



No.	Description	Date

Project number	TBC	FPD-06
Date	9th Sept 2020	
Drawn by	ATJH	Scale
Checked by	MJM	



## Dispensary Solutions, RX Shelving & Pharmacy Design

### Smart solutions for your pharmaceutical storage requirements – X Y Z series

FPD Group Ltd supply a huge range of dispensary equipment to pharmacy shopfitters and healthcare organisations. Our design team are available to answer architects, estimators and end users questions.

Manufacturing facilities include timber, metal, glass and plastic fabrication. If you need a unique reception counter or non standard fixture do not hesitate to send a rough sketch with photographic examples of what you would like produced.

Please browse through our product collections, if you cannot find a system that suits your requirements call our sales team.



[X Series Pharmacy Drawer Systems](#)



[Y Series Pharmacy Pullout Shelves](#)



[Z Series Pharmacy Drawer Systems](#)

FPD Group Ltd X Y Z Series products are used by pharmacy establishments throughout the world.

.....Place your trust in proven dispensary storage components.



[Pharma-Fit](#)



[Pharmacy Shopfitting Shelving](#)



[Counters & Showcases](#)

FPD Group Limited  
Pharmacy Storage Solution Expertise

**FPDGROUP**



## Pharmacy Pullout Shelf

A full height shelving module can take up to 10 pullout shelves for maximum stock density. Shelving units can be easily linked to create longer runs which suit the space available. Modules will also lock together back to back to create a free standing island unit.

- Pullout shelves - extend fully on heavy duty drawer runners to allow easy access to rear.
- Plastic dividers help ensure that different products, strengths and formulations do not become mixed or confused.
- The angle of the shelf allows the stock to slide forward ensuring "first in, first out".
- All shelves can be locked in the open position - ideal for restocking.
- Reduced depth shelves - place above the work surface for handy storage that doesn't interfere with dispensing operations.
- Half width shelves and base plinths create a smaller module so that all available space can be used.
- Flexible labelling system helps identify stock location quickly. Use A-Z or insert your own labels.
- All shelves can be fitted into the system in a horizontal position if required.
- Stock up to four times more than traditional flat shelving.
- The use of sloping pull-out drawers that enable stock to be seen and easily retrieved may also help reduce selection errors.

## Dimensions

	Height	Width	Depth
Pullout Shelf	Ask	Ask	Ask
Reduced Depth Pullout Shelf	Ask	Ask	Ask
Half Width Shelf	Ask	Ask	Ask

## Features



Reduced Depth  
Drawer



Half Width Drawer



Labelling Kit



Extended Shelf



Y Series Pharmacy Pullout Shelf



Pharmacy Pullout Shelving System





## Pharmacy Storage Drawers

The pharmacy deep drawers have been design for storage of bulkier items and finished prescriptions.

- Heavy duty drawer runners mean that up to around 25kg can be stored in each drawer.
- Optional covers improves data protection when used with finished scripts or creates an extratemporary work surface ideal for re-stocking.
- PVC label holders help to create a finished prescription retrieval system or insert your own labels for quickly identifying stock positions.
- Base plinth storage unit takes bulkier items and is removable to aid floor cleaning.

### Dimensions

	Height	Width	Depth
Pullout Drawer	Ask	Ask	Ask
Reduced Depth Pullout Drawer	Ask	Ask	Ask

### Features



Labelling Kit



Plinth Drawer



Optional Drawer  
Top shelf (lifted)



Optional Top Shelf



Y Pharmacy Drawers in Shelving Unit



Pharmacy Deep Drawers And Plinth Drawers



## Pharmacy Work Surfaces

- Hard wearing integrated work surfaces that are adjustable in height to provide ergonomically suitable conditions.
- Grey colour contrasts well with white pills.
- The work surfaces are located into the slotted upright system so could be moved in future if work flow developed or changed.
- Sink unit can be fitted into top.
- Upstand at rear will take electric sockets to provide power close to where you need it.
- Retractable work surfaces - Handy surface that pulls out when needed and is safely stored at all other times.

### Dimensions

	Width	Depth	Height	Thickness
Work Surfaces	Ask	Ask	Ask	Ask
Retractable Work Surfaces	Ask	Ask	Ask	-

### Features



Sliding Bracket



Work Surface  
Upstand



Work Station Work Surface



Work Surface

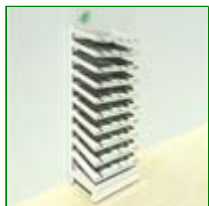


## Y Full Height Pharmacy Drawer & Shelving Units

The variety of components in Y Series provides a wide range of solutions for your pharmacy storage requirements. The components include shelves, drawers, work surfaces, bin racking, monitor brackets, book shelves and much more. Customised pharmacy shelving assemblies can be assembled to suit the individual requirements of the user; below we have listed our most popular pharmacy shelving setups.

- Easy to assemble and install with minimal tools required.
- Pullout shelves have clear fronts increasing visibility of products.
- Sloping pullout shelves assist "First In First Out" medicine storage principle.
- Divider system.
- Deep drawers for bulkier items.
- Clear labelling system.
- Optional Plinth drawers for additional storage. Subject to availability

### Pharmacy Shelving Popular Setups



**FY\_001T Full Height Pharmacy Shelving**  
8 x Pull-out Shelves with Divider Sets  
2 x Slotted Perimeter Uprights  
Product Code: FPD-08708



**FY\_002T Full Height Pharmacy Shelving**  
6 x Pull-out Shelves with Divider Sets  
1 x Base Plinth Drawer with Divider Sets  
2 x Slotted Perimeter Uprights  
2 x Deep Storage Drawer with Divider Sets  
Product Code: FPD-08709



**FY\_003T Full Height Pharmacy Shelving**  
2 x Slotted Perimeter Uprights  
1 x Workshelf & Pair of Brackets  
4 x Pullout Shelves with Divider Sets  
1 x Base Plinth Drawer with Divider Set  
2 x Deep Storage Drawer with Divider Sets  
Product Code: FPD-08710



Pharma Drawer Full Height Shelving - Up to Ten Shelves Per Bay







## FY\_001T Full Height Pharmacy Shelving

Product Code: FPD-08708

Ask for dimension options

### Assembly

- Up to 10 x pull-out Shelves with Divider Sets
- 2 x Slotted Perimeter Uprights
- Optional Base Plinth Drawer or low base.

### Features

- Easy to assemble and install with minimal tools required.
- Pullout shelves have clear fronts increasing visibility of products.
- Sloping pullout shelves assist "First In First Out" medicine storage principle.
- Divider system available.
- Deep drawers for bulkier items.
- Clear labelling system.
- Optional Plinth drawers for additional storage. Subject to availability







## FY\_002T Full Height Pharmacy Shelving

Product Code: FPD-08709

Ask for dimensions

### Assembly

- 6 x Pull-out Shelves with Divider Sets
- 1 x Base Plinth Drawer with Metal Divider Sets
- 2 x Slotted Perimeter Uprights
- 2 x Deep Storage Drawer with Metal Divider Sets

### Features

- Easy to assemble and install with minimal tools required.
- Pullout shelves have clear fronts increasing visibility of products.
- Sloping pullout shelves assist "First In First Out" medicine storage principle.
- Divider system available.
- Deep drawers for bulkier items.
- Clear labelling system.
- Optional Plinth drawers for additional storage. Subject to availability



## FY\_003T Full Height Pharmacy Shelving

Product Code: FPD-08710

Ask for dimensions

### Assembly

- 2 x Slotted Perimeter Uprights
- 1 x Workshelf & Pair of Brackets
- 4 x Pullout Shelves with Divider Sets
- 1 x Base Plinth Drawer with Divider Set
- 2 x Deep Storage Drawer with Divider Sets

### Features

- Easy to assemble and install with minimal tools required.
- Pullout shelves have clear fronts increasing visibility of products.
- Sloping pullout shelves assist "First In First Out" medicine storage principle.
- Divider system available.
- Deep drawers for bulkier items.
- Clear labelling system.
- Optional Plinth drawers for additional storage. Subject to availability





## FY\_004T Full Height Pharmacy Shelving

Product Code: FPD-08711

Ask for dimensions

### Assembly

- 2 x Slotted Perimeter Uprights
- 4 x Pullout Shelves narrow depth with divider Sets
- 1 x Workshelf & Pair of Brackets
- 4 x Large Pullout Shelves with Divider Sets
- 1 x Optional Base Plinth Drawer or low base

### Optional Extras

- Ask For Details

### Features

- Easy to assemble and install with minimal tools required.
- Pullout shelves have clear fronts increasing visibility of products.
- Sloping pullout shelves assist "First In First Out" medicine storage principle.
- Divider system available.
- Deep drawers for bulkier items.
- Clear labelling system.
- Optional Plinth drawers for additional storage. \*Subject to availability





## FY\_005T Full Height Pharmacy Shelving

Product Code: FPD-08712

Ask for dimensions

### Assembly

- Up to 10 Smaller width pull-out Shelves with Divider Sets
- 1 x Smaller Width Base
- 2 x Slotted Perimeter Uprights

### Features

- Easy to assemble and install with minimal tools required.
- Pullout shelves have clear fronts increasing visibility of products.
- Sloping pullout shelves assist "First In First Out" medicine storage principle.
- Divider system available.
- Deep drawers for bulkier items.
- Clear labelling system.





## FY\_006T Full Height Pharmacy Shelving

Product Code: FPD-08713

Ask for dimensions

### Assembly

- 4 x Narrow Depth Pull-out Shelves with Divider Sets
- 1 x Optional Base Plinth Drawer or low base
- 1 x Flat Storage Shelf
- 1 x Shelf Blades (Pair)
- 2 x Slotted Perimeter Uprights
- 1 x Work Surface - (per bay)
- 1 x Work Surface Pr Brackets

### Features

- Easy to assemble and install with minimal tools required.
- Pullout shelves have clear fronts increasing visibility of products.
- Sloping pullout shelves assist "First In First Out" medicine storage principle.
- Divider system available.
- Deep drawers for bulkier items.
- Clear labelling system.
- Optional Plinth drawers for additional storage. Subject to availability





## FY\_007T Full Height Pharmacy Shelving

Ask for dimensions

### Assembly

- 4 x Narrow Depth Pull-out Shelves with Divider Sets
- 1 x Optional Base Plinth Drawer or low base
- 1 x Storage Shelf
- 1 x Pr Shelf Blades
- 2 x Slotted Perimeter Uprights
- 1 x Work Surface - (per bay)
- 1 x Pr Work Surface Brackets

### Features

- Easy to assemble and install with minimal tools required.
- Pullout shelves have clear fronts increasing visibility of products.
- Sloping pullout shelves assist "First In First Out" medicine storage principle.
- Divider system available.
- Deep drawers for bulkier items.
- Clear labelling system.
- Optional Plinth drawers for additional storage. Subject to availability







## FY\_008T Full Height Pharmacy Shelving

Product Code: FPD-08715

Ask for dimensions

### Assembly

- 4 x Narrow Depth Pull-out Shelves with Divider Sets
- 1 x Base Plinth Drawer or low base
- 1 x Sink Cover Panel with Doors
- 2 x Slotted Perimeter Uprights
- 1 x Work Surface - (per bay)
- 2 x Work Surface Brackets

HTM64 Hospital and Lab grade Sink and Taps POA

### Features

- Easy to assemble and install with minimal tools required.
- Pullout shelves have clear fronts increasing visibility of products.
- Sloping pullout shelves assist "First In First Out" medicine storage principle.
- Divider system available.
- Deep drawers for bulkier items.
- Clear labelling system.
- Optional Plinth drawers for additional storage. Subject to availability





## FY\_009T Full Height Pharmacy Shelving

Product Code: FPD-08716

Ask for dimensions

### Assembly

- 2 x Bookshelves
- 1 x Monitor Bracket
- 2 x Slotted Perimeter Uprights
- 1 x Work Surface - (per bay)
- 2 x Work Surface Brackets

### Features

- Easy to assemble and install with minimal tools required.
- Pullout shelves have clear fronts increasing visibility of products.
- Sloping pullout shelves assist "First In First Out" medicine storage principle.
- Divider system available.
- Deep drawers for bulkier items.
- Clear labelling system.
- Optional Plinth drawers for additional storage. Subject to availability



## FY\_010T Full Height Pharmacy Shelving

Product Code: FPD-08717

Ask for dimensions

### Assembly

- Up to 10 x narrow depth pull-out Shelves with Divider Sets
- 2 x Slotted Perimeter Uprights
- 1 x Base Shelf or low base

### Features

- Easy to assemble and install with minimal tools required.
- Pullout shelves have clear fronts increasing visibility of products.
- Sloping pullout shelves assist "First In First Out" medicine storage principle.
- Divider system available.
- Deep drawers for bulkier items.
- Clear labelling system.
- Optional Plinth drawers for additional storage. Subject to availability





## FY\_011T Full Height Pharmacy Shelving

Product Code: FPD-08718

Ask for dimensions

### Assembly

- Up to 6 x Pull-out Shelves with Divider Sets
- 2 x Deep Storage Drawer with Divider Sets
- 1 x Retractable Work Surface
- 1 x Base Plinth Drawer or low base
- 2 x Slotted Perimeter Uprights

### Features

- Easy to assemble and install with minimal tools required.
- Pullout shelves have clear fronts increasing visibility of products.
- Sloping pullout shelves assist "First In First Out" medicine storage principle.
- Divider system available.
- Deep drawers for bulkier items.
- Clear labelling system.
- Optional Plinth drawers for additional storage. Subject to availability



## FY\_012T Full Height Pharmacy Shelving

Product Code: FPD-08719

Ask for dimensions

### Assembly

- 4 x Pull-out Shelves with Divider Sets
- 3 x Deep Storage Drawer with Divider Sets
- 1 x Base Plinth Drawer or low base
- 2 x Slotted Perimeter Uprights

### Features

- Easy to assemble and install with minimal tools required.
- Pullout shelves have clear fronts increasing visibility of products.
- Sloping pullout shelves assist "First In First Out" medicine storage principle.
- Divider system available.
- Deep drawers for bulkier items.
- Clear labelling system.
- Optional Plinth drawers for additional storage. Subject to availability



## FY\_013T Full Height Pharmacy Shelving

Product Code: FPD-08720

Ask for dimensions

### Assembly

- 3 x Flat Storage Shelves with brackets
- 2 x Slotted Perimeter Uprights
- 1 x Base Plinth Shelf or low base
- 1 x Work Surface - (per bay)
- 2 x Work Surface Brackets

### Features

- Easy to assemble and install with minimal tools required.
- Pullout shelves have clear fronts increasing visibility of products.
- Sloping pullout shelves assist "First In First Out" medicine storage principle.
- Divider system available.
- Deep drawers for bulkier items.
- Clear labelling system.
- Optional Plinth drawers for additional storage. Subject to availability



## FY\_015T Full Height Pharmacy Shelving

Product Code: FPD-08722

Ask for dimensions

### Assembly

- 2 x Bookshelf
- 1 x Shelf 200mm
- 1 x Work Surface - (per bay)
- 1 x Work Surface brackets
- 2 x Slotted Perimeter Uprights

### Features

- Easy to assemble and install with minimal tools required.
- Pullout shelves have clear fronts increasing visibility of products.
- Sloping pullout shelves assist "First In First Out" medicine storage principle.
- Divider system available.
- Deep drawers for bulkier items.
- Clear labelling system.
- Optional Plinth drawers for additional storage. Subject to availability.





## FY\_016T Full Height Pharmacy Shelving

Product Code: FPD-08723

Ask for dimensions

### Assembly

- 4 x Pull-out Shelves with Divider Sets
- 3 x Deep Storage Drawers
- 1 x Base Plinth Drawer with Divider Set
- 2 x Slotted Perimeter Uprights

### Features

- Easy to assemble and install with minimal tools required.
- Pullout shelves have clear fronts increasing visibility of products.
- Sloping pullout shelves assist "First In First Out" medicine storage principle.
- Divider system available.
- Deep drawers for bulkier items.
- Clear labelling system.
- Optional Plinth drawers for additional storage. Subject to availability



## FY\_017T Full Height Pharmacy Shelving

Product Code: FPD-08724

Ask for dimensions

### Assembly

- 7 x Narrow Flat Storage Shelves
- 7 x Shelf Brackets (Pair)
- 1 x Base Cover or low base
- 2 x Slotted Perimeter Uprights

### Features

- Easy to assemble and install with minimal tools required.
- Pullout shelves have clear fronts increasing visibility of products.
- Sloping pullout shelves assist "First In First Out" medicine storage principle.
- Divider system available.
- Deep drawers for bulkier items.
- Clear labelling system.
- Optional Plinth drawers for additional storage. Subject to availability





## FY\_018T Full Height Pharmacy Shelving

Product Code: FPD-08725

Ask for dimensions

### Assembly

- 2 x Slotted Perimeter Uprights
- 2 x Bookshelf
- 1 x Shelf 200mm
- 1 x Shelf Blades 200mm (Pair)
- 1 x Storage Shelf 375mm
- 1 x Shelf Blade 375mm (pair)
- 1 x Work Surface - (per bay)
- 1 x Work Surface Bracket (pair)
- 2 x 150mm Drawer

### Features

- Easy to assemble and install with minimal tools required.
- Pullout shelves have clear fronts increasing visibility of products.
- Sloping pullout shelves assist "First In First Out" medicine storage principle.
- Divider system available.
- Deep drawers for bulkier items.
- Clear labelling system.
- Optional Plinth drawers for additional storage. Subject to availability



## Design Services

Our designers can offer expertise in designing pharmacies, surgeries and healthcare facilities. With vast experience in both new build facilities and refurbishment of existing installations our designers are well placed to offer the best services possible.

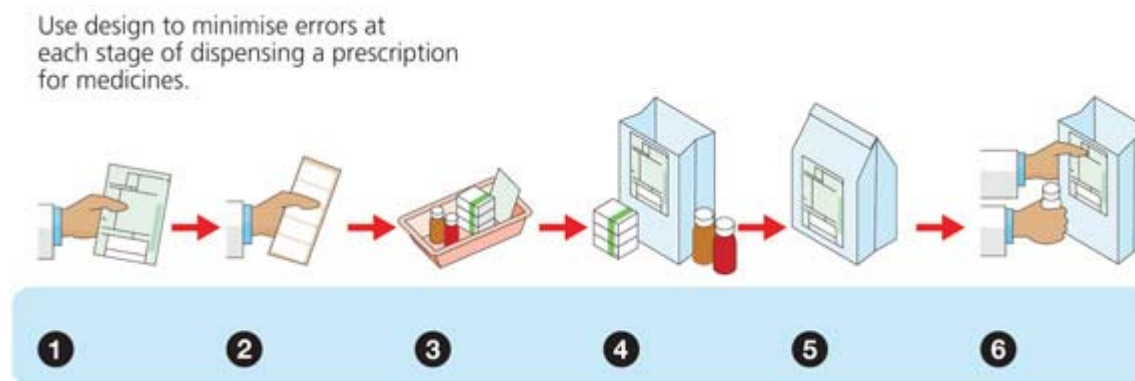
## Process

### 1. Preliminary Discussions

Start the design process by providing as much information as possible about the premises, send sketches, plans or photos to sales@pharmacy-shelving.co.uk. Better still call us at an early stage of your project and a sales consultant will explain exactly what is needed to achieve best results.

### 2. Requirements & Process Flow

Specific requirements need to be discussed early in the project to avoid re-working designs. When designing the latest NHS regulations guidelines are always taken into account. A typical dispensing pharmacy process flow is shown in the diagram below:



### 3. Site Visit

It is not always necessary for FPD to visit your site. Providing accurate plans and photos are made available, specific requirements can be discussed during phone sessions alongside electronic transmission of draft ideas. FPD have successfully managed pharmacy equipment projects in the UK and Overseas, assisting both main contractors and end users without ever visiting premises, our methodology saves time and money for all parties involved.

### 4. Delivery and Installation

Our job is to make sure your all equipment is received safely and when promised. FPD Group Ltd will make sure fitting teams are provided with adequate instructions and telephone support during installation. Most FPD systems sold are relatively easy to erect, we recommend a professional carpenter or experienced installer is selected in advance of any delivery, our sales team will support this contractor and make them aware of any additional fixings or special tools needed to complete works.

#### FPD Group Limited

The Business Centre  
15 Queen Square  
Leeds  
West Yorkshire  
LS2 8AJ  
England

Tel +44 (0) 113 350 8696

Email sales@fpd-group.co.uk



## Installations

FPD Group Ltd will make sure fitting teams are provided with adequate instructions and telephone support during installation. Most FPD systems sold are relatively easy to erect, we recommend a professional carpenter or experienced installer is selected in advance of any delivery, our sales team will support this contractor and make them aware of any additional fixings or special tools needed to complete works.

Let us know if you have difficulty in locating a suitable installer, it is possible we have someone in your region that will be pleased to provide a quotation.



---

## How To Order

### Selecting The Right Products

Selecting the correct pharmacy storage and shelving products is largely dependent on your budgets and the space available. Our consultants can guide you through the process and advise you on the best solutions. If your looking to fit out your pharmacy please provide is with as much information as possible including floor plans, dimensions and photos.

### NHS Purchase Order, MOD Purchase Order, Local Authority Purchase Order

All official government, NHS, MOD, Police, Educational and Local Authority purchase orders are accepted. Fax your purchase order to 0115 727 0123 or email to [sales@fpd-group.co.uk](mailto:sales@fpd-group.co.uk).

### Bank Transfer

Sent bank transfers to:

Payee	FPD Group Limited		
Bank	HSBC Bank plc		
Sortcode	401903	IBAN	GB97MIDL40190302074613
Account Number	02074613	Swift	MIDLGB2104A

If possible send confirmation of your transaction, to speed up the order process.

### Cheques

Make cheques payable to FPD Group Limited and post to:

The address noted below.

### Credit/Debit Card

Payment from UK based businesses can be taken over the telephone or in some instances processed via the website [shopping cart](#). Customers with issued quotations may process their order online using our [Purchase Code](#) web page.

---

### FPD Group Limited

The Business Centre  
15 Queen Square  
Leeds  
West Yorkshire  
England  
LS2 8AJ

Tel +44 (0) 113 350 8696

Email [sales@pharmacy-shelving.co.uk](mailto:sales@pharmacy-shelving.co.uk)

---

## Pharmacy Shelving Exports

Since 1961 FPD Group Ltd's family have been supplying specialist storage equipment. Our extensive experience and technical knowledge now concentrates on providing clients with a quality selection of products for hospitals and healthcare organisations worldwide. We receive export enquiries and orders from all parts of the world and have established customers in UK, Europe, Africa and Asia. Export business activities are supervised by either our UK or Asia offices.

Our client base ranges from overseas ministry of health, defence, hospitals, surgeries, clinics and doctors to aid agencies and disaster relief. FPD Group Ltd export almost any medical product listed on our websites.

FPD estimators have the expertise to supply a single item or to fully equip many types of healthcare facilities. As well as the initial supply of equipment we also offer room design services using our in-house Autodesk Revit Architecture CAD systems.

*\* Export items are normally subject to minimum order values, additional protective packing charges and export shipping costs. Prices shown are Ex Works unless otherwise agreed in writing.*





## BY Pharmacy Work Stations & Bench Drawers

Create an individual free standing island work space. Designed to take any combination of shelves and drawers to provide an efficient working environment that suits staff and workflow. Variable in length - available in 760mm width modules to suit available space.

- Easy to assemble and install with minimal tools required.
- Pullout shelves have clear fronts increasing visibility of products.
- Sloping pullout shelves assist "First In First Out" medicine storage principle.
- High quality work surfaces with upstands if required.
- Divider system.
- Deep drawers for bulkier items.
- Clear labelling system.
- Plinth drawers for additional storage.

### Dimensions

	Height	Work Surface Height	Width	Depth
Item Code	FPD-09991	FPD-09992	FPD-09993	FPD-09994
Two Module Double Sided	1,500mm	940mm	1,720mm	1,200mm
Three Module Double Sided	1,500mm	940mm	2,520mm	1,200mm
Four Module Double Sided	1,500mm	940mm	3,320mm	1,200mm
Five Module Double Sided	1,500mm	940mm	4,120mm	1,200mm

### Features



Reduced Depth  
Drawer



Half Width Drawer



Labelling Kit



Extended Shelf



BY\_2D Two Module Double Sided Pharmacy Work Station



BY Series - are bespoke items and are subject to larger volume viability for smaller order values please ask our sales team for alternatives.



**FPD** Group Limited

Tel: +44 (0) 113 350 8696

[sales@fpd-group.co.uk](mailto:sales@fpd-group.co.uk)

Email: [sales@fpd-group.co.uk](mailto:sales@fpd-group.co.uk)

Web: [www.fpd-group.co.uk](http://www.fpd-group.co.uk)



# FPDGROUP

[www.fpd-group.co.uk/pharmacy-shelving](http://www.fpd-group.co.uk/pharmacy-shelving)